

A Factual Report from Mercury Marine

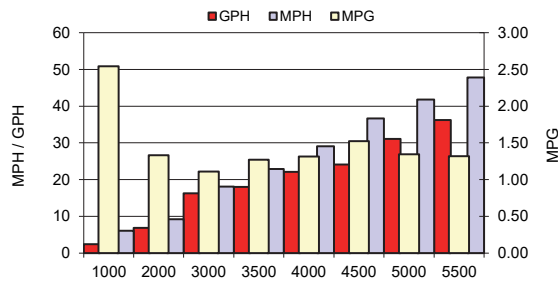
TEST CONDITIONS

Test Date	5/25/2021
Test Conductor	AF/MY/JM
Boat Weight as Tested (lbs)	?
Air Temperature (degrees F)	93
Elevation (ft)	0
Sea State (calm / smooth / slight / moderate)	Smooth
Wind Velocity range (mph)	5
Fresh/Salt Water	Salt
Fuel Level at Testing (gal)	78

PERFORMANCE SUMMARY

Top Speed (mph @ rpm)	59.4 @ 6800
Acceleration 0 - 20 mph (seconds)	6.1
Acceleration 0 - 30 mph (seconds)	9.7
Best Fuel Economy (mpg @ mph)	1.52 @ 36.7

PERFORMANCE CURVE



PERFORMANCE DATA

RPM	SPEED	FUEL CONSUMPTION	FUEL CONSUMPTION	RANGE	SOUND
RANGE	MPH	GPH	MPG	MILES	dB-A
1000	6.1	2.4	2.54		
2000	9.2	6.9	1.33		
3000	18.1	16.3	1.11		
3500	22.9	18	1.27		
4000	29.1	22.1	1.32		
4500	36.7	24.1	1.52		
5000	41.8	31.1	1.34		
5500	47.8	36.2	1.32		
6000	52.9	50.9	1.04		
6500	57.8	72.4	0.80		
6800	59.4	75.1	0.79		

ENGINE SPECIFICATIONS

Number of Engines	2
Engine	MERCURY
Horsepower	400
Cylinders	16
Drive or gear model and ratio	1.75

BOAT SPECIFICATIONS

Region/s sold	worldwide
Manufacturer	SEAPRO
Website	www.seapromfg.com
Boat Model	320
Boat Type	Offshore fishing
Material	FG
Length (in)	31' 9"
Beam (in)	10' 4"
Max hp Capacity	800
Fuel Tank Capacity (gal)	207
Steering Type	Optimus EPS
Dry Boat Weight (lbs)	?
Mounting Bolt Hole (outboard)	3

PROPELLER SPECIFICATIONS

Part Number	
Part Number	
Part Number	
Part Number	
Mercury Name	Revolution 4
Material	SS
Diameter/Pitch	19
Number of Blades	4

MERCURY MARINE PO BOX 1939 FOND DU LAC, WISCONSIN 54936-1939

©2015 Mercury Marine. All Rights Reserved. Results on individual boats may vary depending on many factors.

800-MERCURY MERCURYMARINE.COM